

FRITZ HANSEN



POT™
PRODUCT FACT SHEET

POT™

Arne Jacobsen created the Pot™ in 1959 for the SAS Royal Hotel in Copenhagen. Years later, the Pot was relaunched with a fresh take on Jacobsen's lounge chair, revitalised for the modern interior. Retaining the striking shape of its predecessor, the modern rendition meets today's demands through improved comfort and quality.

PRODUCT TYPE

Lounge chair

ENVIRONMENT

Indoor

DESIGNER / YEAR OF DESIGN

Arne Jacobsen, 1959/2017

ABOUT THE DESIGNER

The collaboration between Arne Jacobsen and Fritz Hansen dates back to 1934. It was not until 1952 however that the team got its breakthrough with the Ant™. It was succeeded by Series 7™ in 1955, thereby enabling both Jacobsen and Fritz Hansen to write their names into furniture history.

MODELS

3318

MATERIAL

Shell: The shell is made of a combination of moulded hard and soft (MDI) polyurethane foam, reinforced with metal frame and with glass fiber enforcement edges before the chair is upholstered with textile or leather.

Base: The base consists of four legs in powder coated or chromed steel.

Materials in %:

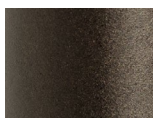
Steel: 42,3%
PUR foam: 40%
Textile: 16,4%
Plastic: 1,3%

COLOURS

The steel base is available in 2 variants:



CHROMED



BROWN BRONZE

UPHOLSTERY

The Pot™ is available in the following selection of textile and leather types:

Textile: Christianshavn™, Canvas, Capture, Comfort, Diablo, Divina, Divina Melange, Divina MD, Fame, Fiord, Hallingdal, Remix, Re-wool, Rime, Steelcut, Steelcut Trio, Sunniva, Tonus.

Leather: Aura, Embrace, Essential, Grace, Natural, Rustik.

MADE-TO-ORDER

Non-standard configurations (special colours, upholstery etc.) are available upon request at a minimum order quantity.

PRODUCTION PROCESS

Shell: The shell of the Pot™ is made of combination of moulded hard and soft (MDI) polyurethane foam with glass fibre reinforcement. The shell is padded with polyurethane (PUR) foam. A water-soluble glue is used for bonding of textile to the foam.

Base: The bases are made of chromed steel or powder coated steel. Fritz Hansen uses both trivalent chromium (Cr3) and hexavalent chromium (Cr6) for chromium plating. Fritz Hansen will convert to solely using trivalent chromium (Cr3) when the capacity in the Industry allows it.

CERTIFICATION

- FSC™ FSC-C120451: The wood used for the Pot™ is FSC-certified (FSC MIX). The FSC-certification ensures the wood is from responsible and environmentally managed forests that preserve the natural surroundings and support the local community.
- GreenGuard Gold

For more information about environment and manufacturing processes, please download our environmental information sheet at: fritzhanzen.com

TEST

- Strength and durability: EN 16139:2013 (EN 1728) Test Level 1 General Contract use
- Stability: EN 1022:2005

WEIGHT

9,1 kg / 20.1 lb

COUNTRY OF ORIGIN

Poland

PRE-ASSEMBLED

Yes

PACKAGING

The chair is covered with a recycled plastic bag and shipped in a recycled cardboard box. All packaging material can be recycled.

CLEANING AND CARE

Find recommendations for cleaning and care at: [fritzhansen.com/maintenance](https://www.fritzhansen.com/maintenance)

REPAIR, DISPOSAL AND REUSE

In case of repair and disposal the chairs can be disassembled into two parts (shell and base). The base and all other metal parts can be recycled. Check local regulations for recycling options and whether there is potential for reuse. The legs and all other metal parts can be recycled. Check local regulations for recycling options and whether there is potential for reuse.

WARRANTY

Fritz Hansen provides a five-year warranty on standard products against defects in materials and workmanship. An extended warranty of up to twenty years is provided on selected products provided they have been registered online on [fritzhansen.com/my-fh](https://www.fritzhansen.com/my-fh).

Standard: 5 years (Lacquer on base, Fabric, Leather: Essential)

Extended: 10 years (Base, Shell, Leather: Aura, Rustik, Natural, Grace, Embrace)

On any material, fabric or leather, which is not listed in our price list on a specific product, the standard warranty is 2 years.

Additional warranty conditions can be found at: [fritzhansen.com/warranty](https://www.fritzhansen.com/warranty)

SPARE PARTS

A range of spare parts can be found on: [fritzhansen.com/en/Categories/Products/Spareparts](https://www.fritzhansen.com/en/Categories/Products/Spareparts)

DIMENSIONS

3318

