

Chair with arms, internal steel structure, padded with CFC-free polyurethane foam. Feet in black plastic material. Covers in removable fabric or soft leather.

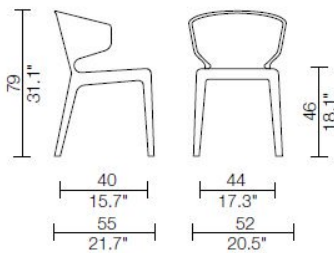
The catalogue configuration has been expanded with the introduction of a new version finished with a combination of two materials: external shell in leather and internal part in a range of selected fabrics.

Gallery

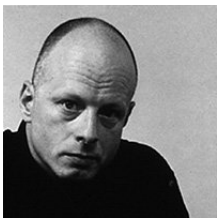




Dimensions



Designer



Hannes Wettstein

Born in 1958 in Ascona (Switzerland), Hannes Wettstein does corporate design, interiors and architecture. Since 1991 he has also taught; he is lecturer at the ETH of Zurich, and teaches at the Hochschule für Gestaltung in Karlsruhe. Apart from furniture, lamps and accessories, he designs professional sound equipment and watches. He started to work for Cassina in 1994 with his Juno bed, and some more recent projects were presented in 2003.