

## Bart Sofa

MOOOI WORKS



Have you ever thought of bringing a touch of grandeur to your home, without conveying the firm austerity of real antiques? Bart reinterprets such splendor. It adds genuine pleasure and softness to the classic silhouette by using modern day skills and a timeless eye for detail. Enjoy 'rounding' off your home with the friendly tenderness of the Bart Family components!

---

### *Detailing*

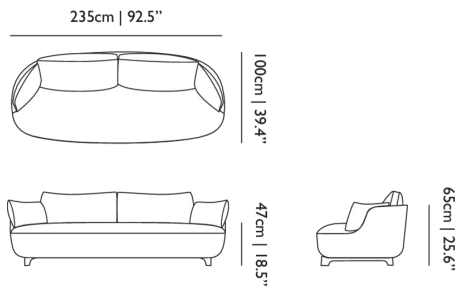


Square angles are tempered and smoothed into the round coziness of curved shapes & features for extra comfort.

---

### *Bart Sofa Canape Sofa*

## Dimensions



## Product

**WIDTH** 235cm | 92.5"  
**HEIGHT** 65cm | 25.6"  
**DEPTH** 100cm | 39.4"

## Packaging

**WIDTH** 102cm | 40.2"  
**HEIGHT** 63cm | 24.8"  
**CUBAGE** 1.51m<sup>3</sup> | 53.33ft<sup>3</sup>  
**LENGTH** 235cm | 92.5"  
**WEIGHT** 89cm | 196.21lbs

## Technical

### MATERIAL

Wooden frame covered in foam and dacron, foam seat.

### HEIGHT ARMREST

65cm | 25.6"

### SEAT DEPTH

74cm | 29.1"

### SEAT HEIGHT

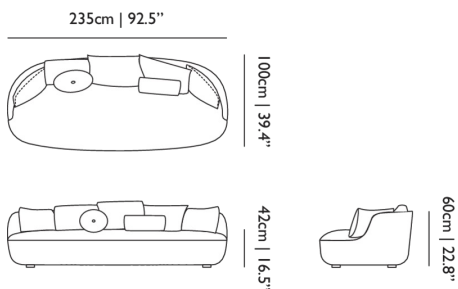
47cm | 18.5"

### SEAT WIDTH

222cm | 87.4"

## Bart Sofa Daybed

## Dimensions



## Product

**WIDTH** 235cm | 92.5"  
**HEIGHT** 60cm | 23.6"  
**DEPTH** 100cm | 39.4"

## Packaging

**WIDTH** 0cm | 0"  
**HEIGHT** 0cm | 0"  
**CUBAGE** 0m<sup>3</sup> | 0ft<sup>3</sup>  
**LENGTH** 0cm | 0"  
**WEIGHT** 0cm | 0lbs

## Technical

### MATERIAL

Wooden frame covered in foam and dacron, foam seat.

### HEIGHT ARMREST

60cm | 23.6"

### SEAT DEPTH

86cm | 33.9"

**SEAT DEPTH 2**

55cm | 21.7"

**SEAT HEIGHT**

42cm | 16.5"

**SEAT WIDTH**

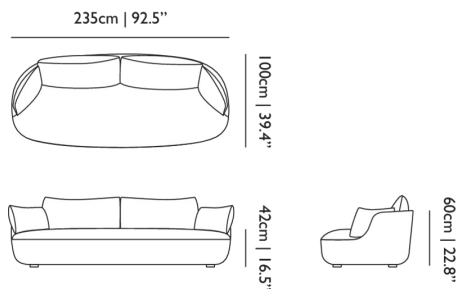
232cm | 91.3"

**SEAT WIDTH 2**

200cm | 78.7"

## *Bart Sofa Basic*

### *Dimensions*



### *Product*

**WIDTH** 235cm | 92.5"**HEIGHT** 60cm | 23.6"**DEPTH** 100cm | 39.4"

### *Packaging*

**WIDTH** 105cm | 41.3"**HEIGHT** 72cm | 28.3"**CUBAGE** 1.89m<sup>3</sup> | 66.74ft<sup>3</sup>**LENGTH** 250cm | 98.4"**WEIGHT** 89cm | 196.21lbs

### *Technical*

**MATERIAL**

Wooden frame covered in foam and dacron, foam seat.

**HEIGHT ARMREST**

60cm | 23.6"

**SEAT DEPTH**

69cm | 27.2"

**SEAT DEPTH 2**

61cm | 24"

**SEAT HEIGHT**

42cm | 16.5"

**SEAT WIDTH**

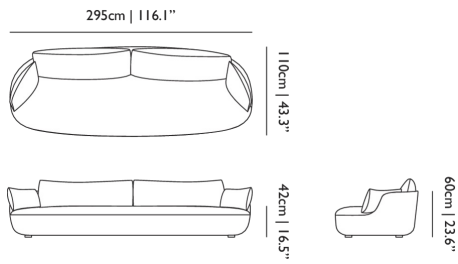
220cm | 86.6"

**SEAT WIDTH 2**

174cm | 68.5"

## *Bart Sofa XL*

## Dimensions



## Product

**WIDTH** 295cm | 116.1"

**HEIGHT** 60cm | 23.6"

**DEPTH** 110cm | 43.3"

## Packaging

**WIDTH** 0cm | 0"

**HEIGHT** 0cm | 0"

**CUBAGE** 0m<sup>3</sup> | 0ft<sup>3</sup>

**LENGTH** 0cm | 0"

**WEIGHT** 0cm | 0lbs

## Technical

### MATERIAL

Wooden frame covered in foam and dacron, foam seat.

### HEIGHT ARMREST

60cm | 23.6"

### SEAT HEIGHT

42cm | 16.5"

### SEAT DEPTH

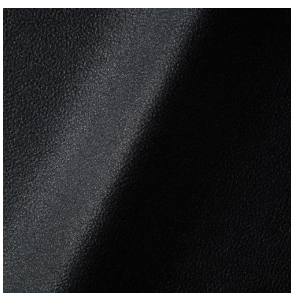
74cm | 29.1"

### SEAT WIDTH

278cm | 109.4"

## Upholstery

*ABBRACCI (available in 5 colours)*



### COMPOSITION

100% PES

### ABRASION

30000 martindale  
lightfastness 3 - 4  
pilling 5

### FIRETEST

BS5852 part 1 on request  
TB117-2013

*ARREDO (available in 2 colours)*



---

*BOUCLE (available in 4 colours)*



**COMPOSITION**

43% CO, 14% PA, 12% CV,  
3% PES, 28% PAN

**ABRASION**

20000 martindale  
lightfastness 4 - 6  
pilling 4 - 5

**FIRETEST**

BS5852 part 1 on request

---

*BYRAM (available in 19 colours)*



**COMPOSITION**

100% WM

**ABRASION**

70000 martindale  
lightfastness 4 - 5  
pilling 4

**FIRETEST**

BS5852 part 1  
TB117-2013

---

*CANVAS 2 (available in 45 colours)*



**COMPOSITION**

90% WO, 10% PA

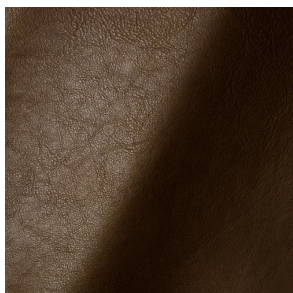
**ABRASION**

100000 martindale  
lightfastness 6  
pilling 4

**FIRETEST**

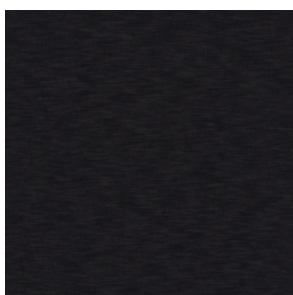
BS5852 part 1 on request  
TB117-2013

*CERVINO (available in 5 colours)*



---

*DENIM (available in 3 colours)*



**COMPOSITION**

100% CO

**ABRASION**

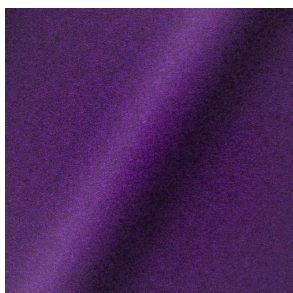
70000 martindale  
lightfastness 4  
pilling 3 - 4

**FIRETEST**

BS5852 part 1 on request  
TB117-2013

---

*DIVINA 3 (available in 56 colours)*



**COMPOSITION**

100% WO

**ABRASION**

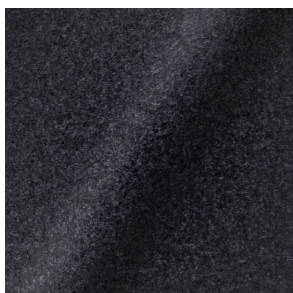
45000 martindale  
lightfastness 7  
pilling 3

**FIRETEST**

BS5852 part 1 on request  
TB117-2013

---

*DIVINA MD (available in 27 colours)*



**COMPOSITION**

100% WO

**ABRASION**

45000 martindale  
lightfastness 6  
pilling 3

**FIRETEST**

BS5852 part 1 on request  
TB117-2013

*DIVINA MELANGE 3* (available in 60 colours)



**COMPOSITION**

100% WO

**ABRASION**

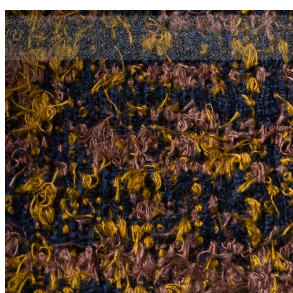
45000 martindale  
lightfastness 6 - 7  
pilling 3

**FIRETEST**

BS5852 part 1 on request  
TB117-2013

---

*Bearded Leopard* (available in 2 colours)



**COMPOSITION**

77% CV, 15% PES, 7% CO,  
1% PA

**ABRASION**

15000 martindale  
lightfastness 4 - 6  
pilling 4

**FIRETEST**

BS5852 part 1 on request  
TB117-2013

---

*Bison* (available in 1 colours)



*Armoured Boar, Cracked* (available in 1 colours)

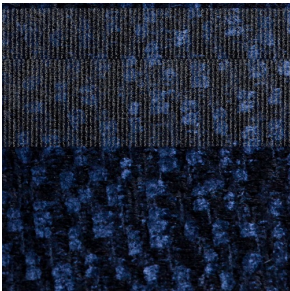


*Armoured Boar, Hairy (available in 1 colours)*



---

*Armoured Boar (available in 2 colours)*



**COMPOSITION**

64% CV, 21% PES, 15%  
CO

**ABRASION**

50000 martindale  
lightfastness 4 - 6  
pilling 5

**FIRETEST**

BS5852 part 1 on request  
TB117-2013

---

*Dodo Pavone (available in 2 colours)*



**COMPOSITION**

12% CO, 88% PES

**ABRASION**

40000 martindale  
lightfastness 5  
pilling 4 - 5

**FIRETEST**

BS5852 part 1 on request  
TB117-2013

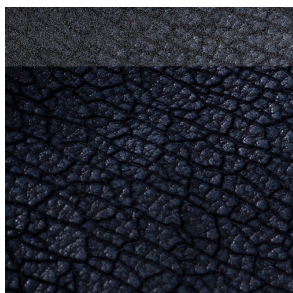
---

*Dwarf Rhino Buffed (available in 1 colours)*





*Dwarf Rhino, Crackle (available in 1 colours)*



---

*Blushing Sloth Melange Mohair (available in 1 colours)*



**COMPOSITION**

85% WV, 15% WM

**ABRASION**

15000 martindale  
lightfastness 4 - 6  
pilling 2 - 3

**FIRETEST**

BS5852 part 1 on request  
TB117-2013

---

*Blushing Sloth Woolly Mohair (available in 2 colours)*



**COMPOSITION**

24% PES, 15% PA, 8% CO,  
24% WM, 29% WV

**ABRASION**

40000 martindale  
lightfastness 4 - 6  
pilling 3 - 4

**FIRETEST**

BS5852 part 1 on request  
TB117-2013

---

*FIORD (available in 27 colours)*

**COMPOSITION**

92% WV, 8% PA

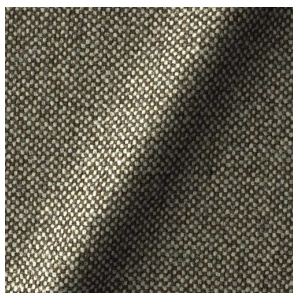
**ABRASION**

60000 martindale  
lightfastness 6  
pilling 4 - 5

**FIRETEST**

BS5852 part 1 on request  
TB117-2013

*HALLINGDAL 65 (available in 58 colours)*



**COMPOSITION**

30% CV, 70% WV

**ABRASION**

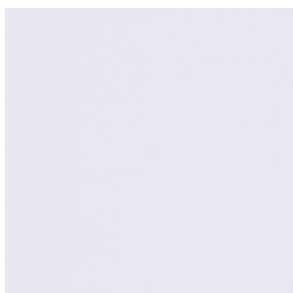
100000 martindale  
lightfastness 7  
pilling 3 - 4

**FIRETEST**

BS5852 part 1

---

*HARALD 3 (available in 30 colours)*



**COMPOSITION**

100% CO

**ABRASION**

100000 martindale  
lightfastness 5  
pilling 4 - 5

*JUSTO (available in 10 colours)*



**COMPOSITION**

15% CO, 35% PC, 10% PA,  
40% CV

**ABRASION**

50000 martindale  
lightfastness 5  
pilling 4

**FIRETEST**

BS5852 part 1 on request  
TB117-2013

---

*LISCIO (available in 23 colours)*

**COMPOSITION**

35% WO, 35% CV, 21%  
CO, 9% PA

**ABRASION**

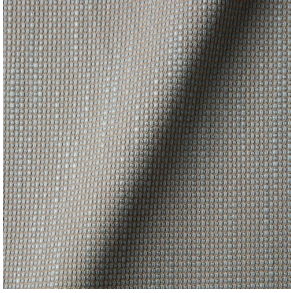
30000 martindale  
lightfastness 4 - 6  
pilling 4

**FIRETEST**

BS5852 part 1 on request  
TB117-2013

---

*MACCHEDIL GREZZO (available in 21 colours)*



**COMPOSITION**

47% CO, 20% CV, 18%  
PA, 8% LI, 5% PC

**ABRASION**

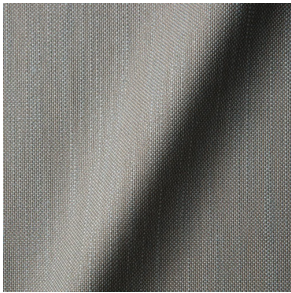
15000 martindale  
lightfastness 3 - 5  
pilling 4 - 5

**FIRETEST**

BS5852 part 1 on request

---

*MACCHEDIL SOTTILE (available in 11 colours)*



**COMPOSITION**

49% CV, 24% PES, 21% LI,  
6% CO

**ABRASION**

20000 martindale  
lightfastness 3 - 5  
pilling 2 - 3

**FIRETEST**

BS5852 part 1 on request

---

*MERIT (available in 43 colours)*

**COMPOSITION**

24% PES, 76%

**ABRASION**

85000 martindale  
lightfastness 7  
pilling 4

---

*MOSAIC 2 (available in 15 colours)*

**COMPOSITION**

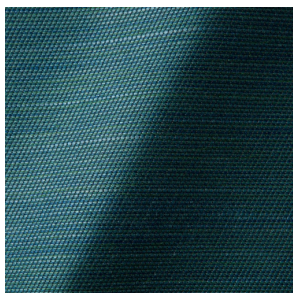
58% PES, 27% WV, 9% PA,  
6% EA

**ABRASION**

100000 martindale  
lightfastness 6 - 7  
pilling 4 - 5

---

*ORAY RAY (available in 31 colours)*



**COMPOSITION**

39% LI, 38% CV, 15% PE,  
8% CO

**ABRASION**

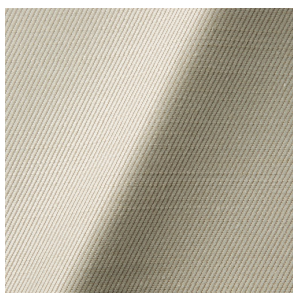
30000 martindale  
pilling 4 - 5

**FIRETEST**

BS5852 part 1 on request  
TB117-2013

---

*ORAY RONAN (available in 11 colours)*



**COMPOSITION**

39% LI, 38% CV, 15% PE,  
8% CO

**ABRASION**

30000 martindale  
pilling 4 - 5

**FIRETEST**

BS5852 part 1 on request  
TB117-2013

---

*REMIX 2 (available in 49 colours)*



**COMPOSITION**

90% WV, 10% PA

**ABRASION**

100000 martindale  
lightfastness 5  
pilling 4

**FIRETEST**

TB117-2013

---

*SOLIS (available in 18 colours)*



**COMPOSITION**

60% WO, 30% PES, 2%  
PA, 3% PC

**ABRASION**

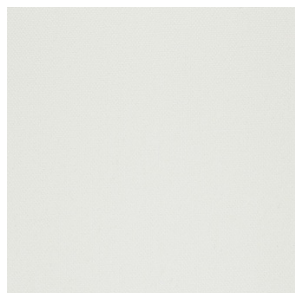
40000 martindale  
lightfastness 5  
pilling 3 - 4

**FIRETEST**

BS5852 part 1 on request  
TB117-2013

---

*STEELCUT 2 (available in 37 colours)*



**COMPOSITION**

90% WV, 10% PA

**ABRASION**

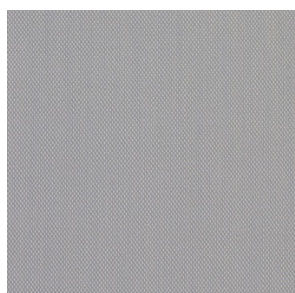
100000 martindale  
lightfastness 6  
pilling 3 - 4

**FIRETEST**

TB117-2013

---

*STEELCUT TRIO 3 (available in 54 colours)*



**COMPOSITION**

90% WV, 10% PA

**ABRASION**

100000 martindale  
lightfastness 5  
pilling 4

**FIRETEST**

TB117-2013

---

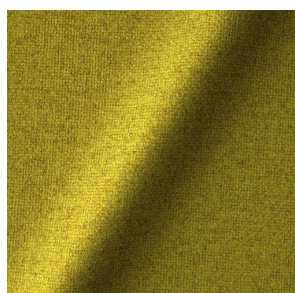
*SUMMIT MELANGE (available in 9 colours)*

---

*SUMMIT UNI (available in 9 colours)*

---

*TONICA 2 (available in 39 colours)*



**COMPOSITION**

100% WV

**ABRASION**

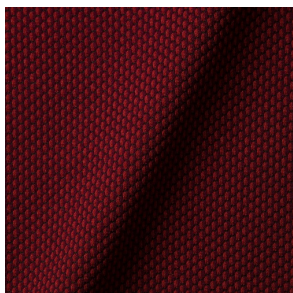
45000 martindale  
lightfastness 6 - 7  
pilling 4 - 5

**FIRETEST**

TB117-2013

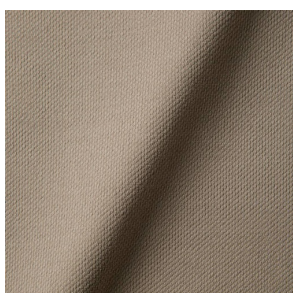
---

*TRICKLE (available in 8 colours)*



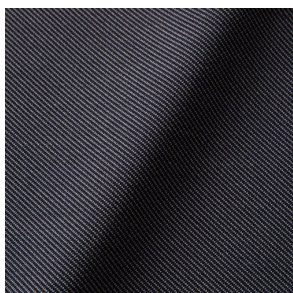
---

*TWILL (available in 9 colours)*



---

*TWILL MELANGE (available in 9 colours)*



---

*VELOUR (available in 5 colours)*

---

*VESPER (available in 16 colours)*



**COMPOSITION**

10% CO, 40% LI, 10% PA,  
10% PES, 30% CV

**ABRASION**

40000 martindale  
lightfastness 5  
pilling 4

**FIRETEST**

BS5852 part 1 on request  
TB117-2013

